

Just Bezels

6 BEZEL MOLDS
FOR POLYMER CLAY
JEWELRY MAKERS LIKE YOU



If you make jewelry to sell or for yourself...

If you are looking for simple and efficient ways to create one-of-a-kind jewelry...

If you want a tool that's going to make it easier and faster to prep your inventory for your on-line shop or the next craft fair..

Then the CaBezel molds are for you!

Shades of Clay.com

Make more, better!

The easiest of all the CaBezel Molds to use....

.....because you don't need to form a cabochon.

Instead, you'll cut it out from something flat using the template provided.

If you're new to polymer clay and you've been hesitant to try CaBezel molds, the JustBEZEL molds are your perfect starter — no need for fancy tools or tricky techniques. Just your creativity and a few simple supplies.

Here's why the Just Bezel Molds are great for your first CaBezel project:

- No Cabochon, Just Your Creativity.

Forget about the cabochon and focus on what you want to create.

Simply use your favorite thin sheets of polymer clay, canes, veneers, or paper to insert into the bezel.

- Designed as a companion to the Sculpey Jewelry Templates so each JustBEZEL Mold comes with the Sculpey jewelry template. All you need to do is trace the shape and cut out your design, and easily fit it into the bezel. This makes it super simple to create something custom, repeatable, and unique.

- Easy to Use: Whether you're using polymer clay, paper clay, or air-dry clay, these molds let you experiment without the worry of getting that perfect cabochon shape.

- Limitless Design Possibilities

The bezels: If cutting around some of the fancier edges intimidates you, then cut beyond the bezel edge. Use a cookie cutter with a simpler, similar shape. It might be round, oval or square etc.

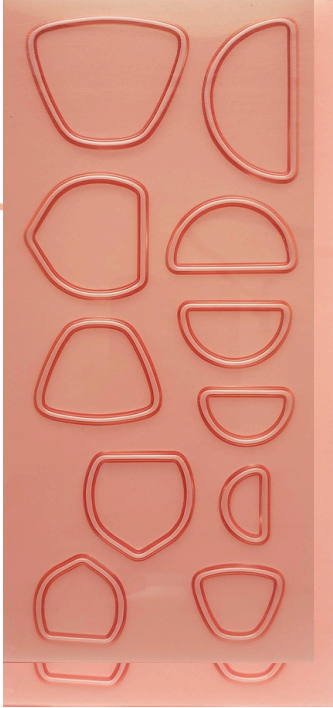
Make more, better!

[Try now](#)

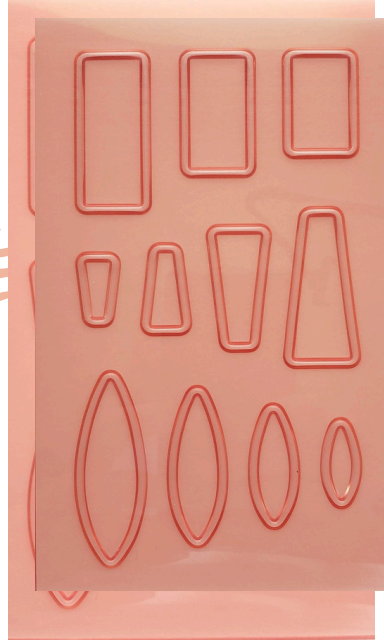
Shades of Clay.com

Meet The 6 Bezel Molds

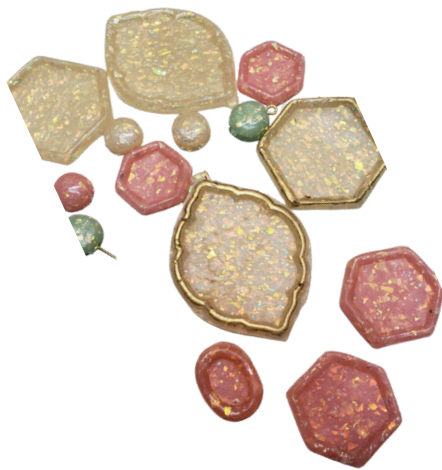
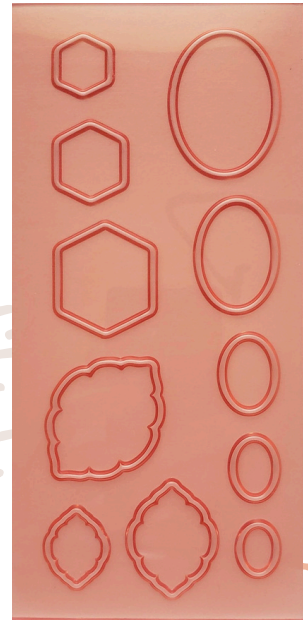
Diana



Lonna



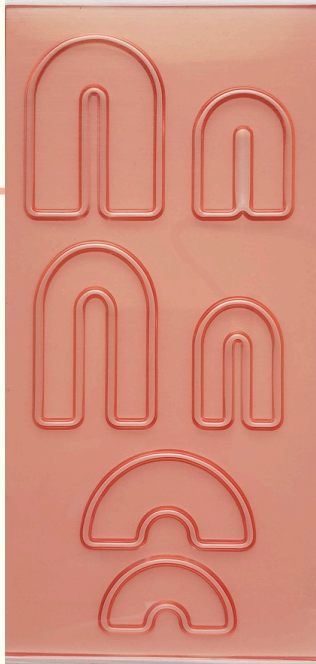
Charlotte



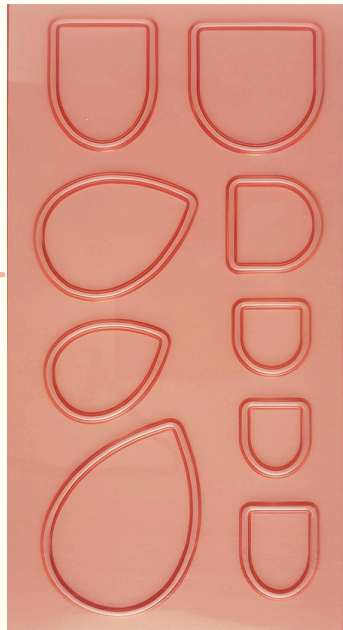
Because some shapes from one CaBEZEL mold pair so nicely with shapes of the other molds I have grouped them together and given a discount when you purchase the sets of 3 or 6 in this CaBEZEL series.

Meet The **6** Bezel Molds

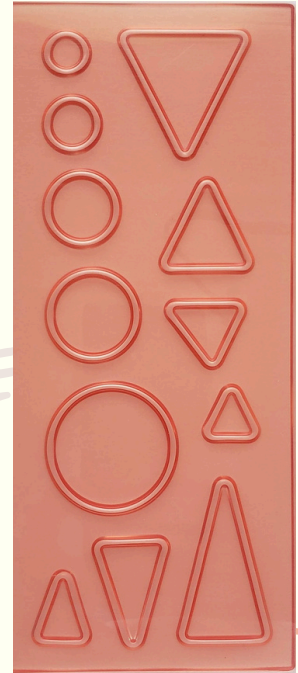
Ashley



Louise



Annie



Every Ca**BEZEL** mold comes with it's Sculpey companion template for cutting the inserts.

[Buy now](#)

shadesofclay.com

Make more, better!

Meet the templates that inspired the CaBEZEL molds.....

SOME HELP FROM SCULPEY TOOLS



These Ca**BEZEL** molds were born as companions to the Sculpey Jewelry Mold Templates.

As you know, we sell Sculpey products at Shades of Clay and after seeing that Sculpey used some of my favourite shapes for their templates, I was excited to get started making some jewelry. Unfortunately, I was left wanting more.

I mean, what was I supposed to do with the shapes cut from clay?

They seemed a little... well, flat.

I immediately had the idea to create companion bezel molds.

Now when I use one of the templates to cut the shape from clay or paper, I have a frame to put them in!

I've thought of so many ways to use these new CaBEZEL molds!

I hope you'll agree that this is a match made in heaven.... kind 'a like peanut butter and chocolate.

Master the use of the CaBezel Jewelry Molds and get beautiful results consistently.

Make more, better!

Introducing the CaBEZELS

Unlike my other CaBezel molds, there isn't a second part that helps you create a rounded cabochon.

Instead, you're going to create a flat insert by using the provided template as a cutting guide!

Use the template with your favourite canes, veneers or paper!

That's right....I'm going to show you how you can use beautiful paper for inserts!

Tip: If you aren't familiar with the other types of CaBezel Molds you can find out more [here](#).



Endless possibilities

buttons
purse accessories
home decor
journal covers
fridge magnets
pins
and of course jewelry!



It's so simple to create original, wearable art!

First, make some bezels from clay, bake them and set them aside.

Now, use the plastic template (included) to cut a perfect fitting insert from sheeted polymer clay or paper. Tip: You can easily use paper clay or other air dry clay with the molds.

Meet the papers..... there are 6 designs

I had fun creating some papers for these CaBEZELS.

The bottom half is a mirror image of the top half so you can create perfectly matching, mirror image earrings if desired.

Of course you can also use pages from your journals or scrapbooks.

Gelli prints work well too.

How about using some of your favourite texture stamps with ink to make your own papers?

The possibilities are endless.

BONUS #1

With every set of 3 or 6 purchased, you will receive a link to those designs so you can download and print as many pages as you want to!

Who doesn't want some original artwork to use in their jewelry!

BONUS #2



While supplies last you'll get a 8.5" X 11", full colour print-out with every CaBEZEL mold **grouping** purchased.



Printed using a laser-toner printer. This means the printer used powder, not liquid so these shouldn't bleed, but papers printed using an inkjet printer will.



[Buy now](#)

Please note: The above examples of paper designs were still a work in progress at the time this PDF was created. The most accurate versions will be shown on the CaBEZEL product pages at Shades of Clay.

The paper designs are pre-chosen for each CaBEZEL mold

Shades of Clay.com

More on using papers....

Sealing the paper

Before you begin, it's a good idea to seal your paper designs.

Not only will it make the paper stronger, it will ensure that there won't be any surprise bleeding later on if you decide to coat it with resin or liquid clay etc.

Also, if you want to trace the template shapes with pencil before you cut, it should allow you to erase any leftover pencil lines.



There are several options for sealing paper:

acrylic medium, white glue or Mod Podge etc., but much of it depends on how you intend to finish your pieces.

There are various ways to finish off your piece depending on the method used for the insert.

You may want to seal with a clear coat, or if you're OK with re-baking them, you can consider Liquid clay or even Cernit Glaze.

If you want a domed effect, you can use Triple Thick or ArtResin to finish them off.

I suggest starting with what you're comfortable with and do a few tests before committing to creating your masterpiece as I can't possibly cover all of the product scenerios with you.

[Buy now](#)

Tip: Always keep a dedicated, clean brush for applying a clear sealer so that no colour shows up from a previous use.

Watch for more ideas and tutorials to help you use all of the [CaBezel Jewelry Molds](#).

Do you want to
Make more, better?

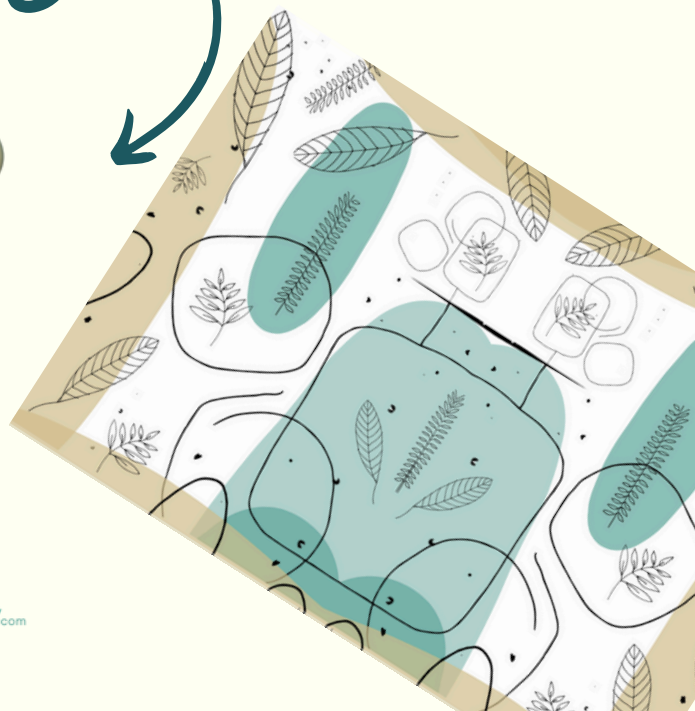
Then
You need These!

6 New CaBEZEL Molds

Just Bezels



[Buy now](#)



Shades of Clay.com

Make more, better... with the CaBezel Jewelry Molds!



Shades of Clay.com



Follow me on Instagram @Wendy Weaver Orlowski and @shadesofclay

All jewelry examples created by Wendy Weaver Orlowski